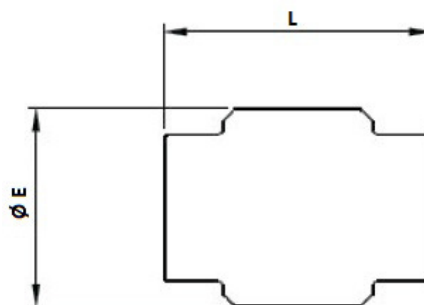


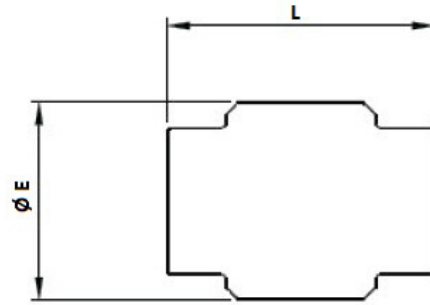
ACOPLAMENTOS

MODELO AD



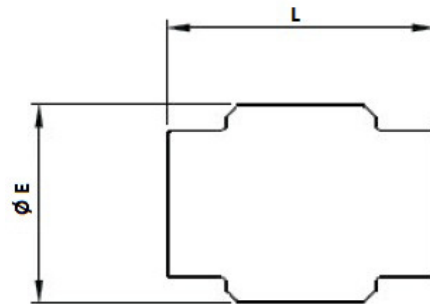
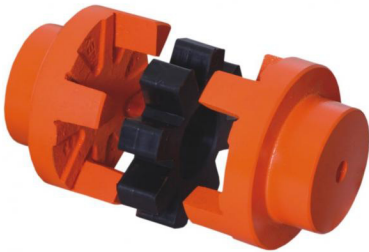
Descrição	Ø E	Ø Eixo Máx.	L	Torque Nm	RPM Máx.	Peso total
AD-3	112	38	104	139,2	4500	3,1
AD-4	125	42	114	220,5	4000	4,5
AD-5	140	48	124	352,8	3600	6,4
AD-6	160	55	144	539,0	3400	9,5
AD-7	170	60	164	882,0	3200	12,7
AD-9	225	80	197	1764,0	2500	25,9
AD-11	270	110	237	3528,0	2200	49,8
AD-13	360	150	300	7056,0	1700	107,8
AD-15	450	180	380	14014,0	1300	213,9

MODELO AG



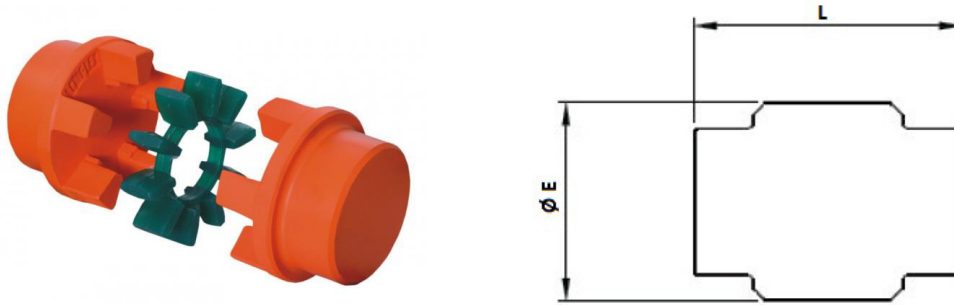
Descrição	Ø E	Ø Eixo Máx.	L	Torque Nm	RPM Máx.	Peso total
AG-50	50	22	52,0	34	9955	0,45
AG-67	67	30	62,5	58	7100	0,93
AG-82	82	38	83,0	133	5820	1,80
AG-97	97	45	103,0	279	4920	3,50
AG-112	112	50	123,5	440	4260	5,00
AG-128	128	60	143,5	705	3730	7,90
AG-148	148	70	163,5	1110	3220	12,30
AG-168	168	80	183,5	1845	2840	18,40
AG-194	194	90	203,5	2865	2460	26,30
AG-214	214	100	224,0	4350	2230	35,60
AG-240	240	120	244,0	6900	1990	46,80
AG-265	265	130	285,5	11000	1800	66,30

MODELO AM



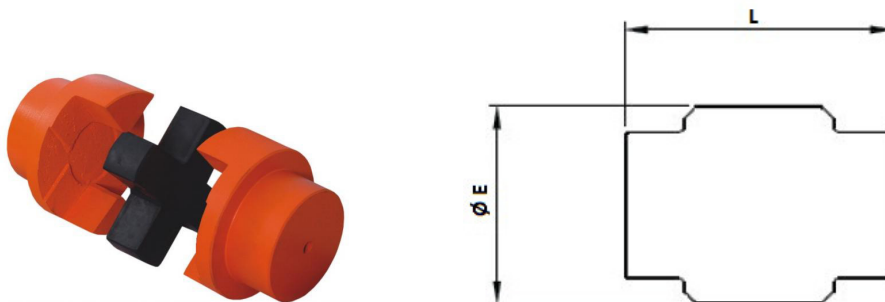
Descrição	Ø E	Ø Eixo Máx.	L	Torque Nm	RPM Máx.	Peso total
AM-2	50	22	62	19,6	6000	0,50
AM-3	68	30	75	40,2	5000	1,00
AM-4	83	35	98	88,2	4200	2,00
AM-5	97	45	120	141,1	3600	4,00
AM-6	112	50	148	246,9	3100	6,50

MODELO AV



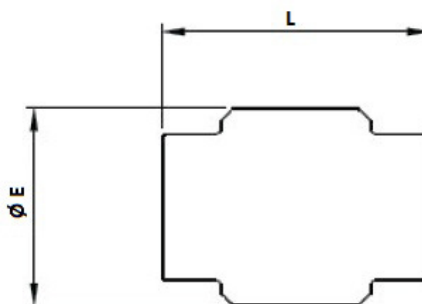
Descrição	Ø E	Ø Eixo Máx.	L	Torque Nm	RPM Máx.	Peso total
AV-28	62	35	76	127,4	10300	1,1
AV-32	70	40	86	196,0	9200	1,6
AV-38	84	45	100	392,0	7600	2,7
AV-42	92	50	110	529,2	7100	3,4
AV-48	105	45	124	754,6	6200	5,0
AV-55	120	65	140	1009,4	5400	7,4
AV-60	130	70	152	1303,4	4900	9,4
AV-65	142	75	165	1783,6	4500	11,9

MODELO AZ



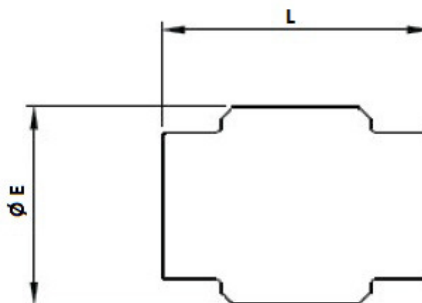
Descrição	Ø E	Ø Eixo Máx.	L	Torque Nm	RPM Máx.	Peso total
AZ-01	48	20	65,4	5,9	3500	0,63
AZ-02	60	25	83,0	12,7	3500	1,21
AZ-03	75	32	104,0	29,4	3500	2,08
AZ-04	95	40	120,0	49,0	3000	4,18
AZ-05	116	50	148,0	98,0	2000	7,22
AZ-06	50	65	200,0	156,8	2000	14,99

MODELO AX CUBO NORMAL



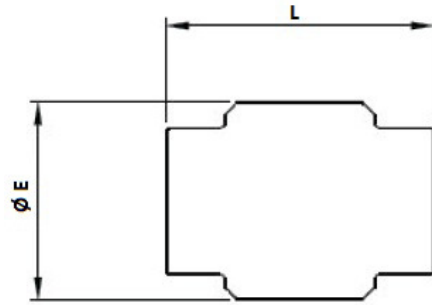
Descrição	Ø E	Ø Eixo Máx.	L	Torque Nm	RPM Máx.	Peso total
AX-20CN	95	23	80	30	5000	1,0
AX-25CN	95	23	80	45	5000	1,1
AX-30CN	127	32	110	65	4000	2,4
AX-35CN	127	32	110	90	4000	2,6
AX-45CN	166	46	150	160	3600	5,3
AX-50CN	166	46	150	340	3600	5,6
AX-60CN	222	65	205	500	3250	13,2
AX-70CN	222	65	205	940	3250	14,2
AX-80CN	302	85	250	1240	2000	23,7
AX-90CN	302	85	250	1700	2000	25,0
AX-95CN	330	100	290	1900	2000	38,5
AX-105CN	300	100	290	2500	2000	40,5

MODELO AX CUBO INTEGRAL



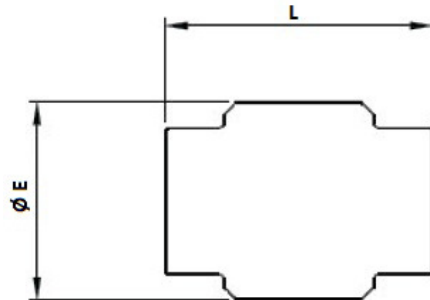
Descrição	Ø E	Ø Eixo Máx.	L	Torque Nm	RPM Máx.	Peso total
AX-20CI	95	38	80	30	5000	1,25
AX-25CI	95	38	80	45	5000	1,30
AX-30CI	127	50	110	65	4000	3,60
AX-35CI	127	50	110	90	4000	3,70
AX-45CI	166	72	150	160	3600	6,60
AX-50CI	166	72	150	340	3600	6,75
AX-60CI	222	105	205	500	3250	21,20
AX-70CI	222	105	205	940	3250	21,50
AX-80CI	302	120	250	1240	2000	39,30
AX-90CI	302	120	250	1700	2000	39,70
AX-95CI	330	145	290	1900	2000	57,20
AX-105CI	300	145	290	2500	2000	57,60

MODELO ASN



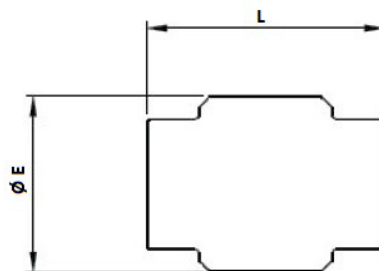
Descrição	Ø E	Ø Eixo Máx.	L	Torque Nm	RPM Máx.	Peso total
ASN-50	50	25	75	61	9500	0,80
ASN-70	70	35	100	240	6800	1,80
ASN-85	85	40	110	330	5600	2,70
ASN-100	105	45	125	585	4700	4,00
ASN-125	126	56	145	1110	3800	6,70
ASN-145	145	67	160	1800	3250	10,0
ASN-170	170	83	190	2850	2800	17,0
ASN-200	200	100	245	4950	2350	31,0
ASN-230	230	118	270	7740	2050	48,0
ASN-260	260	140	285	11940	1800	70,0
ASN-300	300	162	330	17550	1550	105,0

MODELO AE



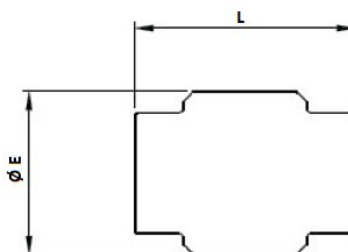
Descrição	Ø E	Ø Eixo Máx.	L	Torque Nm	RPM Máx.	Peso total
AE-28	68	28	80	35,3	5000	0,98
AE-42	88	42	85	70,2	5000	1,85
AE-60	135	60	131	251,9	4000	6,70

MODELO GRADE ELÁSTICA F



Descrição	Ø E	Ø Eixo Máx.	L	Torque Nm	RPM Máx.	Peso total
A-3F	95	27	66	35	6000	1,8
A-4F	103	33	111	95	6000	2,7
A-5F	114	38	111	160	6000	3,6
A-6F	126	46	111	218	6000	4,5
A-7F	142	56	111	429	6000	6,8
A-8F	187	67	156	858	5000	14,0
A-9F	199	71	168	1287	4500	16,0
A-10F	210	83	195	1722	3750	23,0
A-11F	226	91	195	2471	3600	27,0
A-12F	246	98	202	3779	3600	34,0
A-13F	278	108	202	5160	2700	45,0
A-14F	302	118	254	7486	2500	66,0
A-15F	349	127	260	10756	2400	79,0
A-16F	387	140	260	15044	2300	98,0
A-17F	425	152	267	19332	2200	129,0
A-18F	476	178	286	24783	2100	166,0

MODELO ENGRENAGEM LINHA G

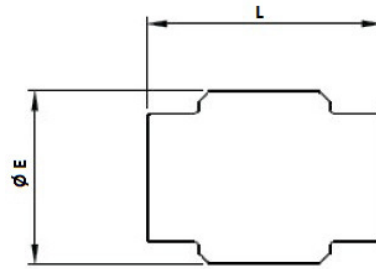


Descrição	Ø E	Ø Eixo Máx.		L	Torque Nm	RPM Máx.	Peso total
		ØdB	ØdA				
A-1010G	115,9	44	37	72	1140	8000	3,7
A-1012G	130,0	47	43	83	1756	7250	5,2
A-1015G	152,4	60	54	95	2348	6500	8,5
A-1020G	177,8	73	71	120	4269	5600	13,3
A-1025G	212,8	92	84	148	7470	5000	25,0
A-1030G	239,7	105	95	178	12094	4400	37,0
A-1035G	279,4	123	105	206	18496	3900	59,0
A-1040G	317,5	146	120	234	30590	3600	86,0
A-1045G	346,1	171	135	262	41971	3200	121,0
A-1050G	388,9	183	160	298	56560	2900	171,0
A-1055G	425,5	205	175	316	73985	2650	239,0
A-1060G	457,2	230	190	338	90345	2450	267,0
A-1070G	527,0	270	---	396	135160	2150	465,0

ØdA: Vedação com câmara retentora.

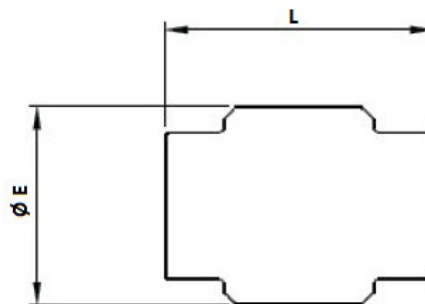
ØdB: Vedação com anel o'ring.

MODELO GRADE ELÁSTICA T



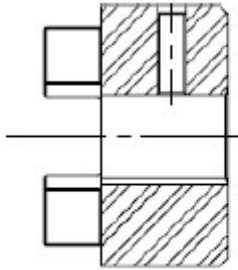
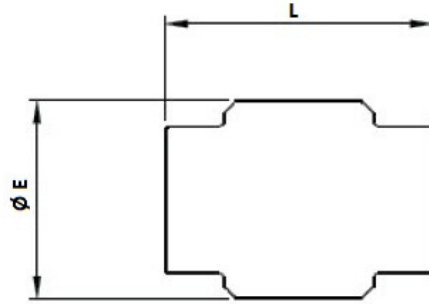
Descrição	Ø E	Ø Eixo Máx.	L	Torque Nm	RPM Máx.	Peso total
A-1020T	101,6	30	98,0	49	4500	1,9
A-1030T	111,3	35	98,0	133	4500	2,6
A-1040T	117,6	43	104,6	225	4500	3,4
A-1050T	138,2	50	123,6	393	4500	5,4
A-1060T	150,9	55	130,0	618	4350	7,3
A-1070T	162,1	65	155,4	912	4125	10,0
A-1080T	193,8	78	180,8	1895	3600	18,0
A-1090T	212,9	95	199,8	3369	3600	25,0
A-1100T	251,0	107	245,7	5685	2400	42,0
A-1110T	270,0	117	258,5	8493	2250	54,0
A-1120T	308,1	136	304,4	12423	2025	81,0
A-1130T	346,2	165	329,8	18038	1800	121,0
A-1140T	384,3	184	371,6	25969	1650	178,0
A-1150T	454,9	203	371,8	36147	1500	234,0
A-1160T	519,9	228	402,2	50816	1350	317,0
A-1170T	585,0	279	437,8	67731	1225	448,0
A-1180T	635,0	311	483,6	93911	1100	619,0
A-1190T	675,6	339	524,2	124232	1050	776,0
A-1200T	756,9	361	564,8	169363	900	1057,0

MODELO TN

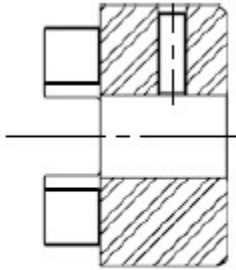


Descrição	Ø E	Ø Eixo Máx.	L	Torque Nm	RPM Máx.	Peso total
TN-35	101	32	122	100	17000	1,60
TN-55	115	34	138	260	14000	2,10
TN-60	162	50	196	400	10700	7,70
TN-70	162	50	206	740	10600	7,90
TN-75	195	62	243	1400	8800	13,16
TN-90	237	80	287	2040	7200	25,20
TN-100	281	100	342,5	3240	5500	51,30

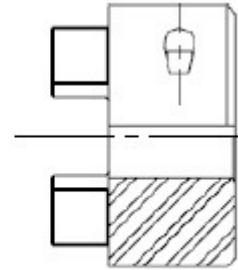
MODELO PRECISÃO AGS



Cubo tipo 1.0 com chaveta e com parafuso de fixação



Cubo tipo 1.1 sem chaveta e com parafuso de fixação



Cubo grampo tipo 2.0 (Corte Único)

Descrição	Ø E	Ø Eixo Máx.			L	Torque Nm	RPM Máx.	
		1.0	1.1	2.0			1.0/1.1	2.0
AGS-9	20	10	11	11	30	5,0	23800	19000
AGS-12	25	12	12	12	34	9,0	19100	15200
AGS-14	30	15	16	16	35	12,5	15900	12700
AGS-19	40	24	24	24	66	17,0	11900	9550
AGS-24	55	28	28	28	78	60,0	8650	6950
AGS-28	65	38	38	38	90	160	7350	5850
AGS-38	80	45	45	45	114	325	5950	4750
AGS-42	95	55	55	50	126	450	5000	4000
AGS-48	105	62	62	55	140	525	4550	3600
AGS-55	120	74	74	68	160	685	3950	3150
AGS-65	135	80	80	80	185	940	3500	2800
AGS-75	160	95	95	95	210	1920	2950	2350

Dispomos de elementos elásticos e peças diversas para vários tipos e tamanho de acoplamentos.

